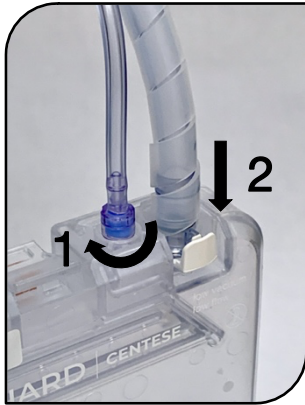
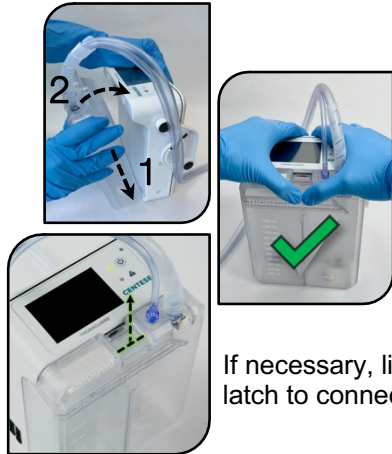


(See other side for canister replacement)

Connect Tubing to Drainage Canister



Connect Canister to Control Module



If necessary, lift latch to connect.

Clamp Drainage Tubing



Turn ON Control Module and Set System Parameters

CLOG CLEARANCE SMARTCHECK



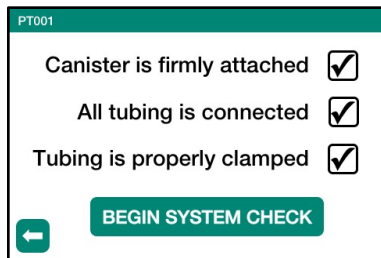
(If applicable)

SUCTION LEVEL

-20



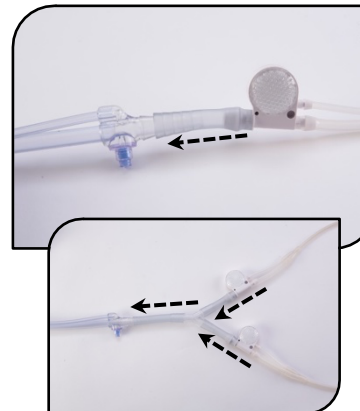
Complete System Check



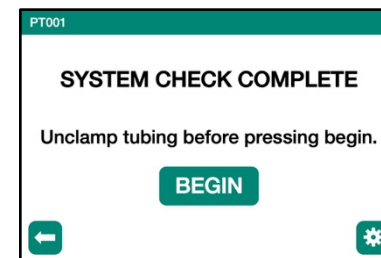
Unclamp Drainage Tubing



Connect Drainage Tubing to Chest Tube



Press BEGIN to Start System Operation



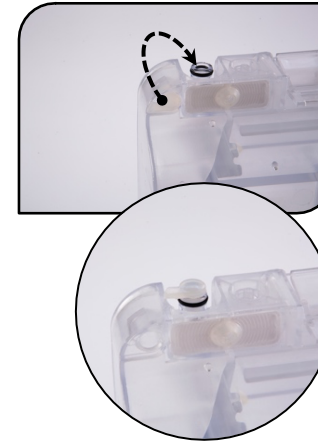
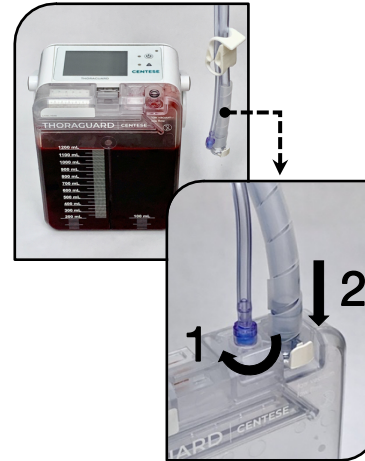
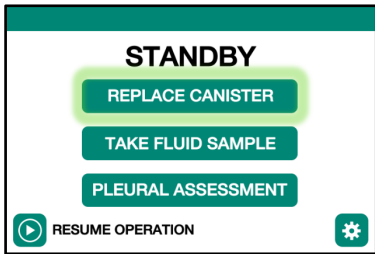
(See other side for initial setup)

Put Control Module in Standby and Press Replace Canister

Clamp Drainage Tubing

Disconnect Tubing and Connect to New Canister

Remove Old Canister, Plug Opening, and Dispose

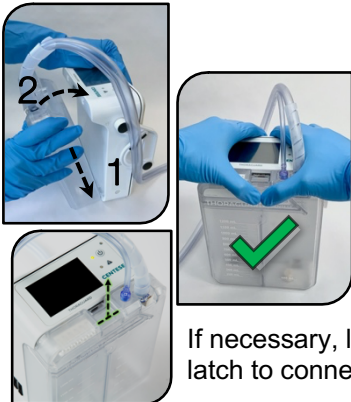


Connect New Canister to Control Module

Complete System Check

Unclamp Drainage Tubing

Press BEGIN to Start System Operation



If necessary, lift latch to connect.

